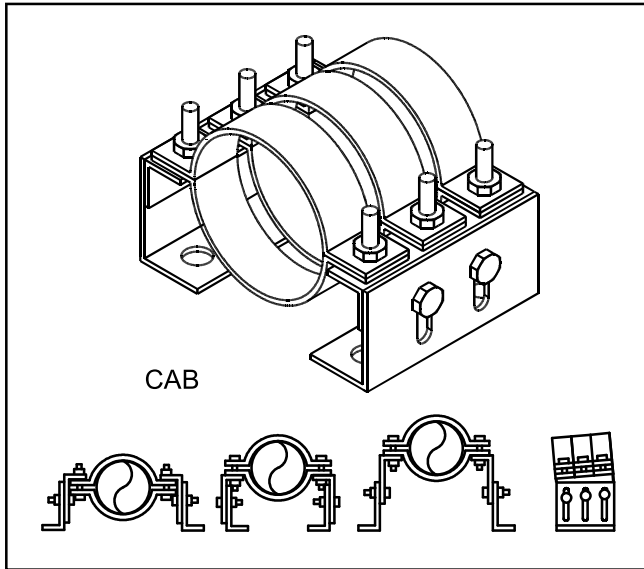


# CLEATED ANCHOR BRACKETS

## Model CAB1, CAB2 + CAB3



### APPLICATIONS

These anchors consist of a series of stainless steel or steel pipe clamp rings, to clamp the pipe, which are in turn bolted to plated steel angle cleats to allow full adjustment for pipe height and slope.

Stainless steel clamp rings can be used with stainless steel, carbon steel and copper thin-walled press-fit pipe systems as well as traditional copper brazed, soldered or compression jointed pipe systems.

Heavier steel clamp rings are suited more to thicker wall scheduled tube welded, threaded or flanged pipe systems.

These models can be used accordingly on stainless steel, carbon steel or copper pipes for the following applications:-

- Low Temperature Heating (LTHW)
- Medium Temp. Heating (MTHW)
- High Temp. Heating (HTHW)
- Domestic Hot Water (DHWS)
- Steam and Condensate

Pipe Size (mm)	To Suit Pipe O.D. Range (mm)	Clamp Ring Bolt Torque (Nm)	Maximum Force (N)	Base Fixing Bolt Size	Product Code (MODEL-SIZE-DIA.RANGE)
15	12 - 15	5	1000	M16	CAB1(SS)-015-(012-015)
18	18 - 22	5	1500	M16	CAB1(SS)-018-(018-022)
22	18 - 22	5	2000	M16	CAB1(SS)-022-(018-022)
28	24 - 28	10	2500	M16	CAB1(SS)-028-(024-028)
35	35 - 37	10	3000	M16	CAB1(SS)-035-(035-037)
42	40 - 44	10	3500	M16	CAB1(SS)-042-(040-044)
54	54 - 58	15	4000	M16	CAB1(SS)-054-(054-058)
67	63 - 67	15	5000	M16	CAB1(SS)-067-(063-067)
76	74 - 78	20	6000	M16	CAB2(SS)-076-(074-078)
89	86 - 90	20	7000	M16	CAB2(SS)-089-(086-090)
108	102 - 108	20	8000	M16	CAB2(SS)-108-(102-108)
15	19 - 22	25	6000	M16	CAB2(BLK)-015-(19-22)
20	24 - 27	25	6000	M16	CAB2(BLK)-020-(24-27)
25	31 - 34	25	6000	M16	CAB2(BLK)-025-(31-34)
32	40 - 43	25	6000	M16	CAB2(BLK)-032-(40-43)
40	46 - 49	25	6000	M16	CAB2(BLK)-040-(46-49)
50	58 - 61	40	8000	M16	CAB2(BLK)-050-(58-61)
65	73 - 77	40	8000	M16	CAB2(BLK)-065-(73-77)
80	86 - 89	40	8000	M16	CAB2(BLK)-080-(86-89)
100	112 - 115	100	12000	M16	CAB3(BLK)-100-(112-115)
125	138 - 141	100	12000	M16	CAB3(BLK)-125-(138-141)
150	166 - 169	100	12000	M16	CAB3(BLK)-150-(166-169)
200	216 - 220	100	12000	M16	CAB3(BLK)-200-(216-220)

### SPECIFICATION

**CAB(SS)** - an assembly of formed BZP steel angle cleats and formed stainless steel clamp rings. To suit copper pipe to EN1057 or steel and stainless steel pipes of the same outside diameter, such as used with press-fit pipe systems, and TruBore pipe systems.

**CAB(BLK)** - as above, but with heavy formed self-colour (black) steel clamp rings, which also allow welding to steel pipe.

**CAB(BZP)** - as above, but with formed BZP steel clamp rings.

**CAB(FP)** - an assembly of heavy duty formed BZP steel angle cleats and extra heavy duty formed BZP steel clamp rings, each with four M16 fastenings. To suit thick walled steel tubes.

Other pipe specifications can be accommodated on request. Please refer to pipe dimensions at the end of this catalogue.

Stainless steel angle cleats and fastenings are available on request.

### OPERATING PARAMETERS

#### **CAB(SS) and CAB(BLK) models**

Upper Temperature Limit = 200 °C  
Lower Temperature Limit = 0 °C

#### **CAB(BZP) and CAB(FP) models**

Upper Temperature Limit = 200 °C  
Lower Temperature Limit = 0 °C

**NOTE:** Clamp ring bolts must be tightened to the stated torque. Over-tightening can cause excessive pipe deformation and under-tightening can allow the pipe to slip.

When used on vertical pipes, 'safety stops' must be brazed or welded to the pipe wall to prevent the pipe from slipping and dropping if the pipe clamps are insufficiently tightened.